



Nomination Form Anadromous Waters Catalog

| | | | |
|---|-------------------|------------------------------------|-------------------------------------|
| Region | SCN | USGS Quad(s) | |
| AWC Number of Water Body | 244-30-10010-2041 | | |
| Name of Water body | | <input type="checkbox"/> USGS Name | <input type="checkbox"/> Local Name |
| <input type="checkbox"/> Addition <input type="checkbox"/> Deletion <input type="checkbox"/> Correction <input type="checkbox"/> Backup Information | | | |

For office use

| | | | |
|---------------------|--|----------------------------|--|
| Nomination # | | Fisheries Scientist | |
| Revision Year | | Fisheries Scientist Date | |
| Revision to Atlas | | Habitat Operations Manager | |
| Revision to Catalog | | Habitat Operations Manager | |
| Revision to Both | | Date | |
| Revision Code | | AWC Project Biologist | |
| | | AWC Project Biologist Date | |
| | | GIS Analyst | |
| | | GIS Analyst Date | |

Observation information

| Species | Date(s) Observed | Spawning | Rearing | Present | Anadromous |
|--------------------|------------------|--------------------------|--------------------------|-------------------------------------|-------------------------------------|
| Coho/Silver Salmon | 9/7/24 | <input type="checkbox"/> | <input type="checkbox"/> | <input checked="" type="checkbox"/> | <input checked="" type="checkbox"/> |

IMPORTANT: Provide all supporting documentation that this water body is important for the spawning, rearing or migration of anadromous fish, including: number of fish and life stages observed; sampling methods, sampling duration and area sampled; copies of field notes; etc. Attach a copy of a map showing location of mouth and observed upper extent of each species, as well as other information such as: specific stream reaches observed as spawning or rearing habitat; locations, types, and heights of any barriers; etc.

| | | | |
|------------------|----------------|-----------|--------|
| Name of Observer | Benjamin Meyer | Signature | |
| Agency | | Date | 9/7/24 |
| Address | | | |

This certifies that in my best professional judgment and belief the above information is evidence that this waterbody should be included in or deleted from the Anadromous Waters Catalog.

| | | | |
|-----------------------------|--|----------------|--|
| Signature of Area Biologist | | Date | |
| Name of Area Biologist | | Revision 11/13 | |

Comments associated with AWC Observation Detail [M-AWC-DETAIL-1151](#)

Coho/Silver Salmon

Minnow traps left out overnight on where unnamed stream crosses public ROW between private parcels. Anadromy likely continues further upstream. Tributary of mainstem Kenai river.



Photo #253 - Image associated with AWC Observation Detail [M-AWC-DETAIL-1151](#)



Photo #257 - Image associated with AWC Observation Detail [M-AWC-DETAIL-1151](#)



Photo #258 - Image associated with AWC Observation Detail [M-AWC-DETAIL-1151](#)



Photo #259 - Image associated with AWC Observation Detail [M-AWC-DETAIL-1151](#)

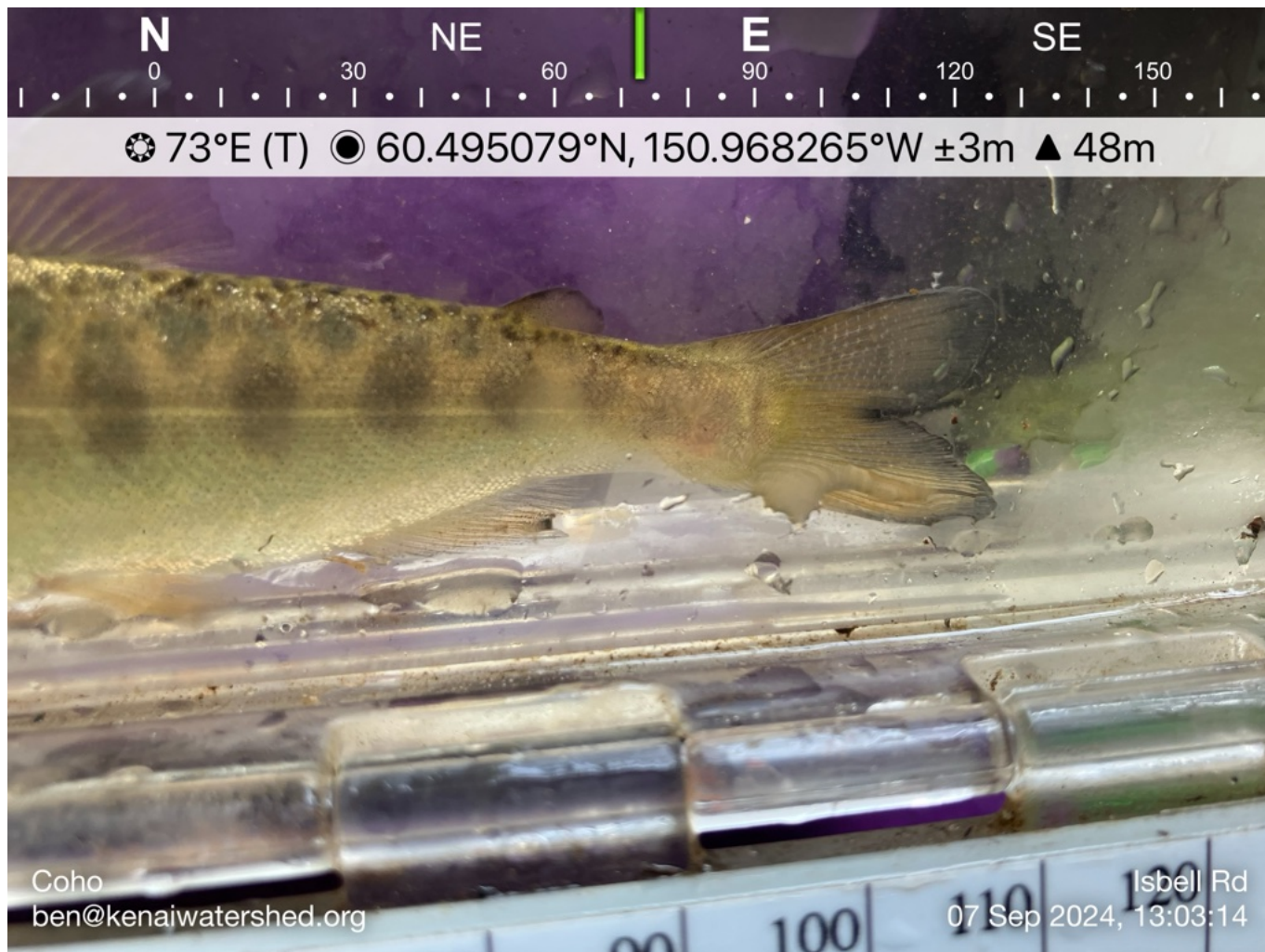


Photo #260 - Image associated with AWC Observation Detail [M-AWC-DETAIL-1151](#)

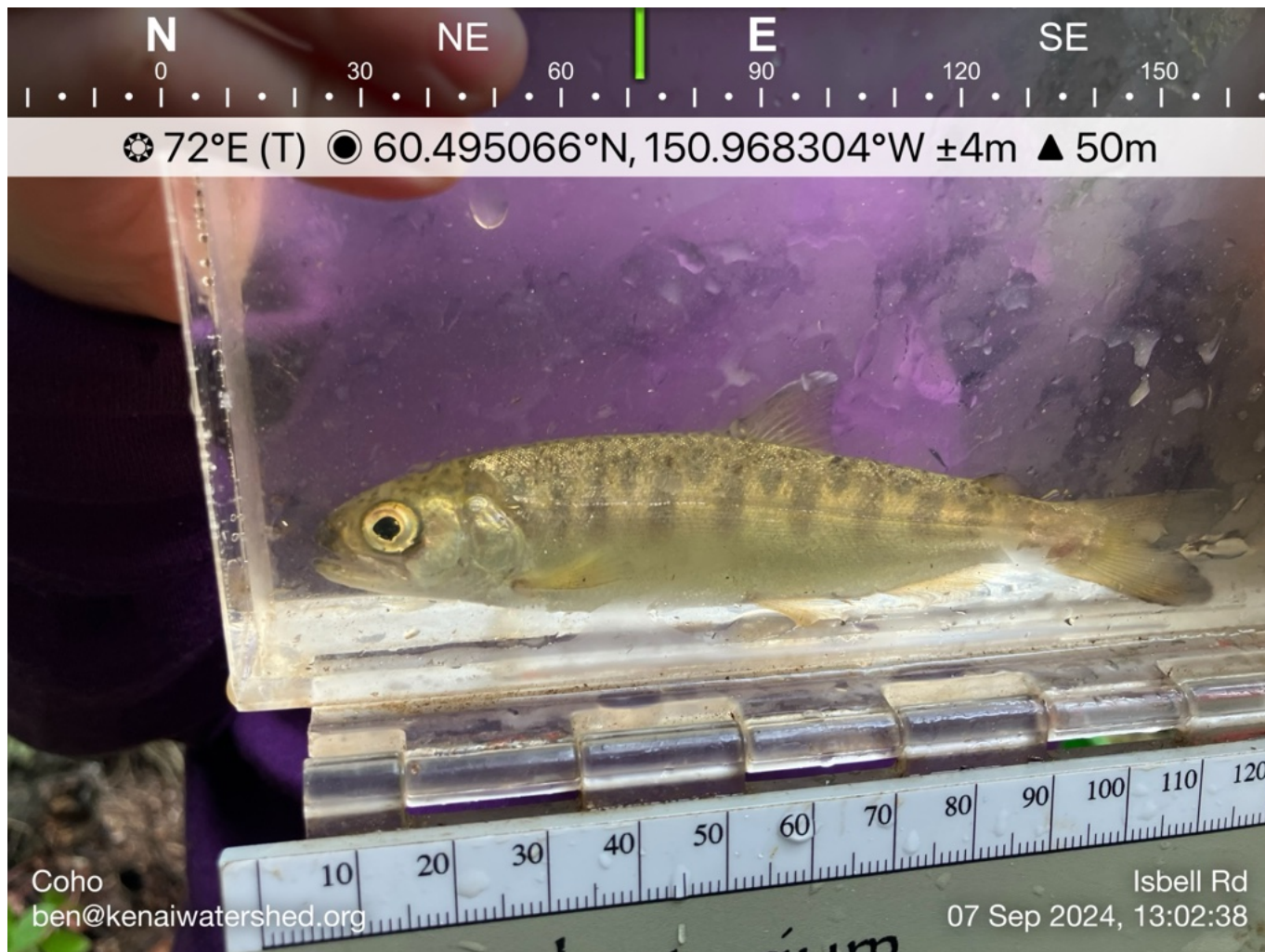


Photo #261 - Image associated with AWC Observation Detail [M-AWC-DETAIL-1151](#)

Section F - Fish ID

Site

Tsball Rd

Start Date

9/6/24

End Date

9/7/24

Species

long

Lifestage

Part

Count

3

FL (mm)

—

Weight (g)

—

Optional

—

Camera ID

Bea11Phase

Photo ID

Slocater

Notes

↓

Species

long

Lifestage

Part

Count

3

FL (mm)

—

Weight (g)

—

Optional

—

Camera ID

Bea11Phase

Photo ID

Slocater

Notes

↓

Species

long

Lifestage

Part

Count

3

FL (mm)

—

Weight (g)

—

Optional

—

Camera ID

Bea11Phase

Photo ID

Slocater

Notes

↓

Species

long

Lifestage

Part

Count

3

FL (mm)

—

Weight (g)

—

Optional

—

Camera ID

Bea11Phase

Photo ID

Slocater

Notes

↓

Species

long

Lifestage

Part

Count

3

FL (mm)

—

Weight (g)

—

Optional

—

Camera ID

Bea11Phase

Photo ID

Slocater

Notes

↓

Species

long

Lifestage

Part

Count

3

FL (mm)

—

Weight (g)

—

Optional

—

Camera ID

Bea11Phase

Photo ID

Slocater

Notes

↓

Species

long

Lifestage

Part

Count

3

FL (mm)

—

Weight (g)

—

Optional

—

Camera ID

Bea11Phase

Photo ID

Slocater

Notes

↓

Species

long

Lifestage

Part

Count

3

FL (mm)

—

Weight (g)

—

Optional

—

Camera ID

Bea11Phase

Photo ID

Slocater

Notes

↓

Species

long

Lifestage

Part

Count

3

FL (mm)

—

Weight (g)

—

Optional

—

Camera ID

Bea11Phase

Photo ID

Slocater

Notes

↓

Species

long

Lifestage

Part

Count

3

FL (mm)

—

Weight (g)

—

Optional

—

Camera ID

Bea11Phase

Photo ID

Slocater

Notes

↓

Species

long

Lifestage

Part

Count

3

FL (mm)

—

Weight (g)

—

Optional

—

Camera ID

Bea11Phase

Photo ID

Slocater

Notes

↓

Species

long

Lifestage

Part

Count

3

FL (mm)

—

Weight (g)

—

Optional

—

Camera ID

Bea11Phase

Photo ID

Slocater

Notes

↓

Species

long

Lifestage

Part

Count

3

FL (mm)

—

Weight (g)

—

Optional

—

Camera ID

Bea11Phase

Photo ID

Slocater

Notes

↓

Species

long

Lifestage

Part

Count

3

FL (mm)

—

Weight (g)

—

Optional

—

Camera ID

Bea11Phase

Photo ID

Slocater

Notes

↓

Species

long

Lifestage

Part

Count

3

FL (mm)

—

Weight (g)

—

Optional

—

Camera ID

Bea11Phase

Photo ID

Slocater

Notes

↓

Species

long

Lifestage

Part

Count

3

FL (mm)

—

Weight (g)

—

Optional

—

Camera ID

Bea11Phase

Photo ID

Slocater

Notes

↓

Species

long

Lifestage

Part

Count

3

FL (mm)

—

Weight (g)

—

Optional

—

Camera ID

Bea11Phase

Photo ID

Slocater

Notes

↓

Species

long

Lifestage

Part

Count

3

FL (mm)

—

Weight (g)

—

Optional

—

Camera ID

Bea11Phase

Photo ID

Slocater

Photo #262 - Image associated with AWC Observation Detail [M-AWC-DETAIL-1151](#)

Kenai Watershed Forum
Anadromous Habitat Survey Field Form

| Section A - Sample Event | | | | | | | |
|--|----------------|------------------|----------------|-------------|------------|------------|--------------------|
| Site Arrival Date | 9/6/24 | Site Depart Date | 9/7/24 | | | | |
| Site Arrival Time | 11:35 | Site Depart Time | 13:30 | | | | |
| Site | Isbell 2 | Latitude | 60.445059 | | | | |
| Crew | BN, CH, JH | Longitude | -150.968253 | | | | |
| Section B - Site Measurements | | | | | | | |
| Water Temp | 6.9 | Instrument | Oakton PCT-100 | | | | |
| Air Temp | | Time | 11:35 | | | | |
| Section C - Sample Effort | | | | | | | |
| Event | Start Date | Start Time | Stop Date | Stop Time | Gear Type | Gear Count | Fish Capture Count |
| 1 | 9/6/24 | 11:35 | 9/7/24 | 13:35 | MT | 6 | 6 |
| 2 | | | | | | | |
| 3 | | | | | | | |
| 4 | | | | | | | |
| 5 | | | | | | | |
| 6 | | | | | | | |
| 7 | | | | | | | |
| 8 | | | | | | | |
| 9 | | | | | | | |
| 10 | | | | | | | |
| Section D - Site Photos | | | | | | | |
| Camera ID | iPhone | Photo ID | Solo Cator | Photo Notes | Upstream | | |
| | | | | | Downstream | | |
| Section E - Notes | | | | | | | |
| General Notes | | | | | | | |
| 3 DV and 3 coho Messick family volunteers Mijem Kuzee (NERF) | | | | | | | |
| Note: If you are sampling at new coordinates, or on a new day, use a new data sheet. | | | | | | | |
| Side A | QC1 | QC2 | QC3 | | | | |
| | For Office Use | Data Entry | | | | | |

Photo #263 - Image associated with AWC Observation Detail [M-AWC-DETAIL-1151](#)